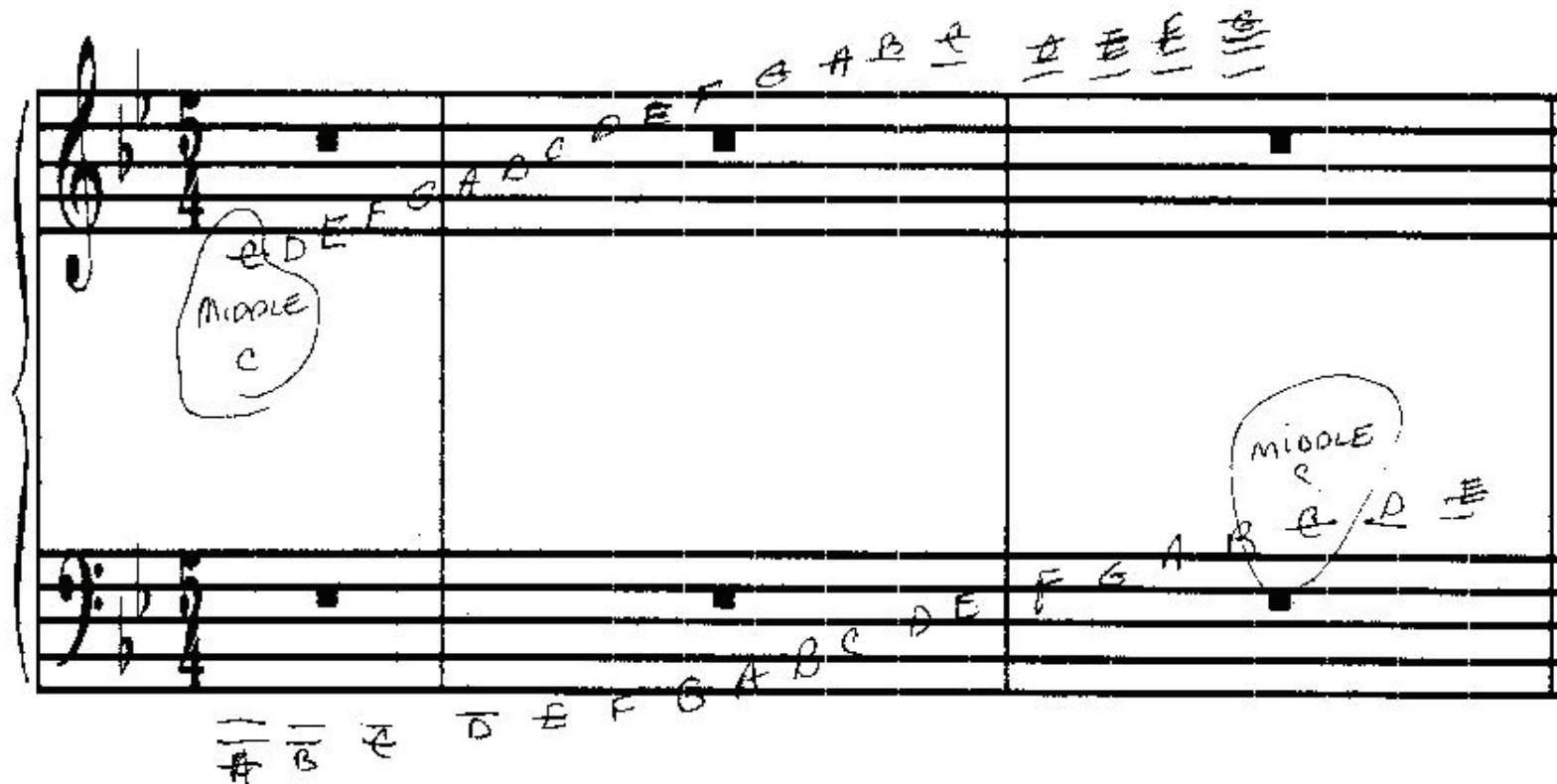


THE GRAND STAFF

The grand staff is the combined treble and bass clef staves. Pianos are one of the instruments that use this staff. Note the different pitch arrangement. Remember, the Treble Clef staff is also referred to as the "G" Clef. The large circle circumnavigates the g line. The bass Clef Staff is also referred to as the "F" Clef. The two dots are located above and below the f line.

There is a long vertical line and a brace connecting the two staves on their left edge.



In music we use the first seven letters of the alphabet to name the pitch or sounds that we make: **ABCDEFG**.

We use these letters many times over due to the eight note diatonic scale which is the basis for most of the music in existence today.

Treble Clef  lines are, starting from the bottom line going up:


Every Girl and Boy Deserves Fudge or EGBDF

Treble Clef  spaces are, starting from the bottom space going up:

F A C E or FACE

Bass Clef  lines are, starting from the bottom line going up:

Girls and Boys Deserve Fudge Always or GBDFA

Bass Clef  spaces are, starting from the bottom space going up:

All Cajuns Eat Gumbo or ACEG